



Dates for your Calendar

(New items on the calendar will appear in italics)

March

Mon 21

Harmony day

Tue 22

School Council Sub Committee Meeting 6:30pm

School Council Meeting 7:30pm

Fri 25

2022 National Ride to School Day

EEPS Twilight Movie Night on the oval -7pm

Mon 28

Sushi Lunch

School Photos

Thursday 31st March

April

Fri 1

School Cross Country

Fri 8

Prep Rainbow Day

Last Day Term 1—

2:30pm dismissal

Swimming Dates

Year 1

May

23rd—27th

Year 2

May & June

30th—3rd

Year 3&4

October

10th—14th

Year 5&6

October

17th - 21st

Prep

October & November

Tue 11th, 18th, 25th

8th, 15th & 22nd

Camp Dates

Year 6 Camp Woorabinda

August—Mon 8—12

Year 5 Camp Kangaroo

August -Mon 22—Fri 26

Year 4 Camp ADANAC

October—Mon 24—Wed 26

Year 3 Camp Candlebark

November—Thu 17—Fri 18

Year 2 Day Camp—YMCA

December—Wed 14th

EEPS UNIFORM SHOP

Open every

Monday &

Wednesday

8:45am—11:15am



Newsletter: Term 1 No: 4 15th March, 2022



Dear parents and carers,

I do hope that families were able to take advantage of the long weekend, and the sunny Melbourne weather, to have a mini recharge and 'power-up' for the last four weeks of term.

Curriculum Day- Friday

Last Friday was a very effective Curriculum Day for EEPS staff. The first half of the day was around some additional modules in the Resilience Project, including a live presentation to staff from one of the Project's Education Officers. The second part of the day was some Professional Learning for staff in assessment practices for reading and the end of the day was time for staff to complete their pre-course work for our first aid updates this afternoon. It certainly was action packed.

Making Connections

Last week I spoke about school connectedness. This week we have included a helpful information page from the Resilience Project that focuses on ways to build and maintain family connections.

NAPLAN Readiness

This year, for the first time, all schools will be conducting the May NAPLAN tests purely online. In preparation for this there are a number of tasks that schools are required to undertake, including a technical capability check. We will start this process over the next couple of weeks.

New Year 5 & 6 Furniture

We were very pleased to take delivery of some new, flexible classroom furniture for all our Year 5 and 6 classrooms last Friday morning. Thank you to the students for their input into the choices and to Mr Tyndall for his organisation of the furniture. We look forward to seeing the impact that this has on engagement with our senior students.

2023 Tours and Enrolments

Although it does seem early in the year we have started conducting tours for 2023 prep enrolments. If there are any siblings of our existing EEPS students for Prep 2023 then please talk to Anna Strebinos in the School Office, about the process and timeline for enrolling.

National Day of Action Against Bullying and Violence

This Friday, 18th March is the 2022 National Day of Action Against Bullying and Violence. We have a whole-school activity planned first thing in the morning and all teaching teams will specifically shine a light on these important issues on Friday, and with follow-up lessons. Creating a safe, respectful and inclusive school learning environment will always be our aim. Thank you to Mrs Carson for organising the activities this year.

Eltham East Primary School—eltham.east.ps@education.vic.gov.au
School Council President: Katie Cramp—Katie.Cramp@education.vic.gov.au
www.facebook.com/elthameast
www.elthameastps.vic.edu.au

Continue.....

Movie Night

Don't forget that the Movie Night is fast approaching, next Friday 25th March. Make sure you have purchased your ticket! It is going to be a lot of fun. Please let the office know if you are able to help out with popcorn making, icy pole sales or raffle ticket selling, or first aid on the night.

RATs

The office does have a supply of RATs, so please continue to pick them up every two weeks. The Department is recommending that the twice weekly student RATs continue until the end of term.

Thank you to our parents who have been so supportive in helping managing COVID cases, isolation requirements and all with a smile!

Have a great week.

Learning and Growing Together

Warren Lloyd
Principal

David Tyndall
Assistant Principal

Lisa Joseph
Leading Teacher

EEPS FINANCE NEWS

Excursions and Incursions

This year an Event for each excursion/incursion will be published on Compass for payment and consent as it occurs throughout the year. For your budgeting purposes, it is anticipated that the total costs for the year will be as set out in the table below. Please remember that swimming lessons for all students, and the associated transport costs, will be at no cost to parents this year.

Prep	\$110 - \$120	
Year 1	\$110 - \$120	
Year 2	\$130 - \$140	Includes day camp
Year 3	\$110 - \$120	Excludes camp
Year 4	\$140 - \$150	Excludes camp
Year 5	\$170 - \$180	Excludes camp
Year 6	\$250 - \$260	Excludes camp and graduation

These Excursion and Incursion charges are optional costs for curriculum enhancement. Parents are free to opt for their children not to participate and this will be handled respectfully and discretely. As per the Parent Payment Policy, children of families who opt not to pay by the due/closing date on Compass will be unable to participate in the event. Individual phone calls will not be made on the day of the event.

Jenny and Lesley

Admin News

Compass Portal

School Photo Day – Thursday 31st March

MSP Photography will be at EEPS on **Thursday 31st March**. Please see details below of how to place an order.

The Department of Education require us to have permission to take your child's photo. Online payment or pre ordering does NOT give the required permission. Please consent to this event on Compass (events) NOW.

ELTHAM EAST PRIMARY SCHOOL PHOTO DAY Thursday 31st March 2022

Ordering Now Open!

Orders can now be made through your Compass Portal via your email link or under the 'Community' tab.

Place your order now to ensure our best pricing!

Family/Sibling Photos are available for students attending the school.
Family photos orders must be placed by 11.59PM the day before photo day.



Class Group Style



Parents with 3 or more children can receive a concession with our Premium or Classic Packs.

To take up this offer, please contact us prior to photo day at family.nem@msp.com.au

WE'RE HERE TO HELP!

9466 7331 | admin.nem@msp.com.au



RIDE or
WALK
to school

Save the
Date!

Friday March 25th

is Ride/Walk to School Day. We invite all parents/carers and students to participate in this fun and healthy event.



Prep 2023 Enrolments

Prep 2023 enrolment packages are now available from the EEPS office and on the EEPS website www.elthameastps.vic.edu.au

Parents seeking to enroll their child are asked to provide their child's birth certificate or passport, their School Immunisation Certificate, details of any relevant medical issues including asthma or anaphylaxis plans and any other information that may assist us in ensuring your child's transition to their new school is successful. We also ask that you bring a recent gas, electricity account or rental agreement showing your address.

School Enrolment Process

Every year we have a high demand for places at our school and we will continue to grow in 2023. For Prep—Year 6, we are accepting children where we are your closest school. The **Find my School website** is a single source provided by DET to visually present all school zones throughout Victoria and to make it easier to find your local neighbourhood school or other public school option.

We are accepting all enrolments from Tuesday 1st March until Friday 17th June. From 18th July, you will receive a letter confirming your place at our school.

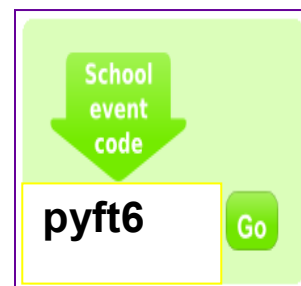
- Families for whom EEPS is the closest state primary school will have priority.
- If you already have a child at the school and we are **not** your closest school, please ensure that you enroll your child **before the closing date to secure your place.**

After this, remaining places will be given to families outside our area.

Book your Prep Transition sessions online

Go to: www.schoolinterviews.com.au and follow the simple instructions.

1. **Music and Movement for Parents and Children:** Wednesday June 8th & Friday June 10th
2. **Story Time for Parents and Children:** Wednesday July 20th & Friday July 22nd
3. **Art Lesson for Children:** Wednesday August 24th & Friday August 26th



Orientation Program

Big Book Fun for Children: Upon receipt of enrolment form, we will book your child into this session at the school office or if you have emailed your enrolment, you will receive an email with booking date and time.

Session dates are: Wednesday October 12th & Friday October 14th.

Classroom Visit for Children (1hr & 15min session): Wednesday November 2nd **OR** Friday November 4th

Orientation for Children (1 hr session): Tuesday December 6th.

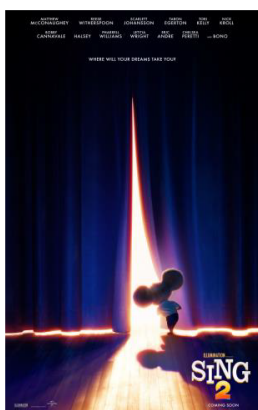
You will be notified of your child's session via a Compass email later in term 4.

EEPS Twilight Movie Night

Friday 25th March, 2022



Pack a picnic dinner, rugs, beanbags and cushions to join us on the EEPS oval snuggled down in front of the big screen under the stars. Start arriving at 7.00 pm, the movie will start at dusk.



Popcorn, Icy Poles and some fantastic raffle prizes!



Please order tickets by Thursday 24th March.

\$10 per person for adults and school age children (capped at \$50 for a family).

Pre-schoolers free.

Please order your ticket/s via Compass – Course Confirmation/School Payments on Home Screen.

Please ensure to enter \$0.00 in the amount field for the item you **do not** want to order.

Enter amount for number of tickets required (\$10 = 1 ticket, \$20 - 2 tickets etc)

Tickets will be sent home or can be picked up from the office from **Monday 21st March.**

As this is a social event the children will be the responsibility of their parents for the evening. **Children cannot attend unless their parent/guardian is attending.**

Please no glass at the event or chair legs on the synthetic turf

On the night we'd like people to start arriving at 7:00pm and we will commence the movie at dusk.

See you there!

COVID-19 vaccination information

Please remember that Department policy requires parents and carers and other adult visitors attending this event to show evidence of COVID-19 vaccination on arrival, or medical exemption. Thank you.

2022 Community Activities

Donations for Movie Night raffle

We are calling for donations, no matter how big or small for our fundraising raffle that will be held at the family movie night on Friday 25th March. In past years, local business have been a great support, however we are mindful of the effects COVID-19 has had on many of these business. We are happy to accept wine, new packaged toys, vouchers if you have a business or anything else you think would be suitable. Please contact Caroline Melocco if you can assist (carolinemelocco@outlook.com)

Bakers Delight Lunches & Sushi Lunches

Bakers Delight and Sushi lunches will begin again in 2022. Please look out for lunch order forms in the newsletter.

Please write your child's name, class, room number and if it's a Bakers Delight or Sushi lunch on the order form and envelope and place lunch order form and cash into envelope.

Last day to place a lunch order is the Thursday before. Late orders will not be accepted.

Lunch Order dates for 2022

Sushi Lunch	Monday 28th March	<i>Order form need to be at the school office by Thursday 24th March</i>
Bakers Delight Lunch	Monday 16th May	<i>Order form need to be at the school office by Thursday 12th May</i>
Sushi Lunch	Monday 20th June	<i>Order form need to be at the school office by Thursday 16th June</i>
Bakers Delight Lunch	Monday 25th July	<i>Order form need to be at the school office by Thursday 22nd July</i>

Icypole sales

Icypoles will be sold out of the Discovery Kitchen every Monday. The cost of an icypole is \$1.00.

Scholastic Bookclub

Issue 2 orders are due back to the school office or via LOOP online by **Thursday 17th March.**

TERM 1

MARCH 2022

Garden News

Never underestimate the healing power of a quiet moment in the garden



Lemon Verbena

Students are taking home lemon verbena which has unique health benefits and has been used for hundreds of years to treat digestive and respiratory conditions, it is also helpful for sleep and anxiety. Lemon verbena is rich in antioxidants and anti-inflammatory compounds.

Lemon Verbena is versatile and can be used dried or fresh in teas, soups, chicken or fish dishes, jams, shortbread and desserts.

Asian Greens

We also have bok choy for students to take home, bok choy is high in nutrients and low in carbohydrates. A simple way to enjoy bok choy is to sauté some garlic and shallots in oil, then add the bok choy and some soy sauce (or coconut aminos). You could add some chopped vegetables, or chilli sauce.



Lemon Verbena Iced Tea

Add some lemon verbena and mint leaves to boiled water.

Allow to steep for a few minutes

Add cold water

Strain the leaves

Add some ice cubes

Enjoy



Students are enjoying the tomatoes as they slowly ripen.



Sushi Lunch – Monday 28th March, 2022

(Orders close on Thursday 24th March)

From Maki Sushi

4 delicious varieties to
choose from:

- Tuna (cooked tuna with mayo & cucumber)
- Chicken (chicken teriyaki & lettuce)
- Prawn roll (cooked prawn, cucumber & mayo)
- Vegetarian (avocado, cucumber and carrot)

Orders need to be placed by Thursday 24th March . No late orders will be accepted.

Correct money please. CASH ONLY

Please use a separate order per child, extra forms available at the office

The soy sauce provided contains gluten

Please note: due to the number of orders we can only offer one flavor per box – all flavors come as standard – we are unable to provide special requests.

The cost for **2 sushi rolls** in a box with soy sauce is **\$6.50**

The cost for **1 sushi roll** in a box with soy sauce is **\$3.50**

(Please note: change of price).

EEPS Sushi lunch payment slip
(Lunch order date: Monday 28th March)
Please return this slip by Thursday 24th March with your payment in an envelope.
(No late orders will be accepted).

Cash Only

First name: _____

Surname : _____

Class: _____

Tuna 2 rolls or 1roll

Chicken 2 rolls or 1roll

Prawn 2 rolls or 1 roll

Vegetarian 2 rolls or 1 roll

Food Allergy Alert

Please tick the box if your child has an allergy relevant to the above ingredients.

Total Amount: _____ (Cash only)

Please note: one flavour per box

1 box with 2 rolls is \$6.50. 1 box with 1 roll is \$3.50 Each order comes with 1 soy sauce.

Enjoy your **MakiSushi!**

EEPS Sushi lunch payment slip
(Lunch order date: Monday 28th March)
Please return this slip by Thursday 24th March with your payment in an envelope.
(No late orders will be accepted).

Cash Only

First name: _____

Surname : _____

Class: _____

Tuna 2 rolls or 1roll

Chicken 2 rolls or 1roll

Prawn 2 rolls or 1 roll

Vegetarian 2 rolls or 1 roll

Food Allergy Alert

Please tick the box if your child has an allergy relevant to the above ingredients.

Total Amount : _____ (Cash only)

Please note: one flavour per box

1 box with 2 rolls is \$6.50. 1 box with 1 roll is \$3.50 Each order comes with 1 soy sauce

Enjoy your **MakiSushi!**

Newsletter Advertising

We accept advertisements to be included in our newsletter from most areas of private industry, however it should be noted that Eltham East's School Council does not endorse any product or service advertised.



TENNIS LESSONS
LOCATION: RESEARCH TENNIS CLUB

WE SPECIALIZE IN LESSONS FOR BEGINNERS

SPECIAL OFFER!!
ENROL NOW & RECEIVE A **30% DISCOUNT** AND A NEW RACKET FOR **FREE!**

FOR MORE INFORMATION
TEL: 9432-3706
WEB: WWW.TOPLINETENNIS.COM
EMAIL: INFO@TOPLINETENNIS.COM

TOPLINE TENNIS
ANZ HOT SHOTS tennis

Newsletter Advertising—Community Notices

We accept advertisements to be included in our newsletter from most areas of private industry, however it should be noted that Eltham East's School Council does not endorse any product or service advertised.

edendale 



Enquiries: Richard Rowe, Edendale Coordinator
Telephone: 9433 3231

28 February 2022

Celebrating the platypus in the Diamond Creek – drawing competition for primary school students

As part of our 'Celebrating the Platypus in the Diamond Creek' family event at Edendale Farm, we're running a drawing competition, with some great prizes up for grabs!

The event will be held on Saturday 26 March, 1.30pm-6.30pm.

Categories for the competition include:

- prep, grade 1 and 2
- grade 3 and 4, and
- grade 5 and 6.

We're looking for creative entries that convey one or more of the following messages relating to platypus conservation:

- Never leave rubbish around parks and waterways
- Throw out fishing line and don't leave it where you've been fishing
- Save the Diamond Creek platypus
- Keep your dog on a lead around the Diamond Creek
- Help plant habitat plants along the creek

Entries must be received by 5pm on Friday 18 March.

Entries can be:

- dropped off at Council's Civic Drive office in Greensborough,
- dropped off at Edendale Community Environment Farm,
- or posted to:

Richard Rowe
C/O Nillumbik Shire Council
PO Box 476
Greensborough VIC 3088

We have prizes available for three winners in each age group, which will be presented at **4pm** on the day of the event. **Winners will need to be present at the celebration day in order to receive their prize.**

Please include the entrant's name, suburb, school, and year level. Entries must have this information to be considered. Please also include a parent or carer's contact details (phone number and/or email).

nillumbik.vic.gov.au/platypus

30 Gastons Road Eltham Victoria 3095
03 9433 3711 | ABN: 64 487 894 794
edendale@nillumbik.vic.gov.au

edendale.vic.gov.au