



## Dates for your Calendar

(New items on the calendar will appear in italics)

### February

**Thur 17**

3 Way Conference 3.:45pm to 7:15pm

**Fri 18**

EEPS Swimming trials

**Tue 22**

School Council Sub Committee Meeting 6:30pm

School Council Meeting 7:15pm

**Fri 25**

District Swimming

Prep Teddy Bears Picnic

**Mon 28**

Preps commence full time

Bakers Delight Lunch

### March

**Mon 14**

Labour Day Public Holiday

**Mon 21**

Harmony day

**Tue 22**

School Council Sub Committee Meeting 6:30pm

School Council Meeting 7:30pm

**Fri 25**

2022 National Ride to School Day

Prep & New Families picnic

5-7pm (weather permitting)

**Curriculum Dates for 2022 (Student free day)**

Friday 11th March

**School Photos**

Thursday 31st March

### April

**Fri 1**

School Cross Country

**Fri 8**

Prep Rainbow Day

Last Day Term 1—

2:30pm dismissal

### Camp Dates

May - Mon 2nd to Fri 6th

Year 6 Camp Woorabinda

### EEPS UNIFORM SHOP

Open every

Monday &

Wednesday

8:45am—11:15am



## Newsletter: Term 1 No: 2 15th February, 2022

Dear parents and carers,

Another week of opportunity and challenge. Whilst we didn't have many parents at our outdoor assembly yesterday morning, those that were there would agree that there are certainly lots of things happening around the school. Our student leaders provided a lot of informative information, reminders and inspiring quotes.

### RATS

Thank you to everyone for your patience with the additional supply of RATS. For those families who haven't picked up additional tests for these next two weeks, then please either call in or make contact with the office. Thank you to the school office staff, Anna, Lesley and Jenny, who have been coordinating the distribution of RATS and helping parents navigate the administrative requirements of positive COVID cases. Some parents have also expressed concerns about the results of the RATS- please remember to follow the guidelines and all the 'dos and don'ts' to ensure they are as accurate as they can be.

### Friendships

At Assembly this week I reminded the students that we cannot ever have too many friends. Starting off a new year in a new grade with a different group of students brings both opportunities and challenges. Please continue to encourage your child/ren to continue to foster friendships both inside their own class, across classes and, of course, with outside interests such as football, swimming, basketball, calisthenics or dance.

### 3 Way Conferences

We are halfway through our 3 Way Conferences, which have been very positive. I received a lot of nice feedback from parents walking around the school last Tuesday evening on how well their children have settled into the routines and expectations of the new school year.

### Professional Learning

We frequently remind the EPPS community of our school motto of '*Learning and Growing Together*'. This Thursday we are releasing our Professional Learning Community Leaders for a Professional Development session with David Tyndall, Assistant Principal. In the afternoon we are releasing our teachers who are new to EEPS for a further induction session to further assist their understanding of the EEPS teaching processes and practices.

### Parent Helper Vaccination Requirements- reminder

Just a reminder that from February 25th all parent helpers will need to show proof of triple vaccination or have a valid medical exemption. Thank you to those parents and carers who have started showing the required information to the school office.

Eltham East Primary School—[eltham.east.ps@education.vic.gov.au](mailto:eltham.east.ps@education.vic.gov.au)  
School Council President: Katie Cramp—[Katie.Cramp@education.vic.gov.au](mailto:Katie.Cramp@education.vic.gov.au)  
[www.facebook.com/elthameast](http://www.facebook.com/elthameast)  
[www.elthameastps.vic.edu.au](http://www.elthameastps.vic.edu.au)

Continue.....

**Hats Reminder**

We still have a few students who are having difficulty locating a school hat. If parents could help children find the stray hats that would be wonderful.

Have a great week.



## *Learning and Growing Together*

*Warren Lloyd*  
*Principal*

*David Tyndall*  
*Assistant Principal*

*Lisa Joseph*  
*Leading Teacher*

## **EEPS FINANCE NEWS**

### **Parent Payments**

We remind parents that Parent Payment contributions are on Compass for payment please.

### **Excursions and Activities**

This year a Compass Event for each excursion/incursion or activity will be created and submitted to parents for payment and consent.

We will not be having a term by term payment as in previous years.

### **CAMPS, SPORTS AND EXCURSIONS FUND (CSEF)**

Please refer to the information on the next page to see if you are eligible to apply. Parents are encouraged to lodge the application form by **18th February, 2022** so that payments can be made from **1st March 2022**. However schools can accept parent applications up until **24th June, 2022**. Forms are available from the school office as well as via Compass (pencil—School Resources). If you have previously lodged a form you **do not** need to lodge another one.

Jenny and Lesley



## FINANCIAL ASSISTANCE INFORMATION FOR PARENTS

Every Victorian child should have access to the world of learning opportunities that exist beyond the classroom. The Camps, Sports and Excursions Fund helps ensure that no student will miss out on the opportunity to join their classmates for important, educational and fun activities. It is part of making Victoria the Education State and the Government's commitment to breaking the link between a student's background and their outcomes.

### CAMPS, SPORTS & EXCURSIONS FUND (CSEF)

School camps provide children with inspiring experiences in the great outdoors. Excursions encourage a deeper understanding of how the world works while sports teach teamwork, discipline and leadership. All are a part of a healthy curriculum.

CSEF is provided by the Victorian Government to assist eligible families to cover the costs of school trips, camps and sporting activities.

If you hold a valid means-tested concession card or are a temporary foster parent, you may be eligible for CSEF. A special consideration category also exists for asylum seeker and refugee families. The allowance is paid to the school to use towards expenses relating to camps, excursions or sporting activities for the benefit of your child.

The annual CSEF amount per student is:

- \$125 for primary school students
- \$225 for secondary school students

### MORE INFORMATION

For more information about CSEF visit:

<https://www.education.vic.gov.au/about/programs/Pages/csef.aspx>

### HOW TO APPLY

New applicants should contact the school office to obtain a CSEF application form or download from the website below.

If you applied for CSEF at your child's school last year, you do not need to complete an application form this year unless there has been a change in your family circumstances.

You only need to complete an application form if any of the following changes have occurred:

- **new student enrolments;** your child has started or changed schools this year.
- **changed family circumstances;** such as a change of custody, change of name, concession card number, or new siblings commencing this year.

Check with the school office if you are unsure.



## Mental Health and Wellbeing

Our Wellbeing goal at EEPS for 2022, is to have connected and resilient children in an inclusive environment. With a focus on students maintaining healthy relationships, being self-regulated and self-motivated and knowing how to help themselves with their wellbeing.

To support the development of these skills, students at EEPS participate in weekly CORE lessons. Underpinned by our school values and safe, respectful and caring relationships, the EEPS CORE is our comprehensive social and emotional learning program. CORE draws on learning materials from PATHS, Respectful Relationships and The Resilience Project. Teachers also adjust the program as required to suit our community needs. CORE lessons provide all students with opportunities for:

### Personal Learning

- Me
- My values
- My strengths

### Social Learning

- Diversity and equity
- Healthy relationships
- Conflict resolution

### Emotional Learning

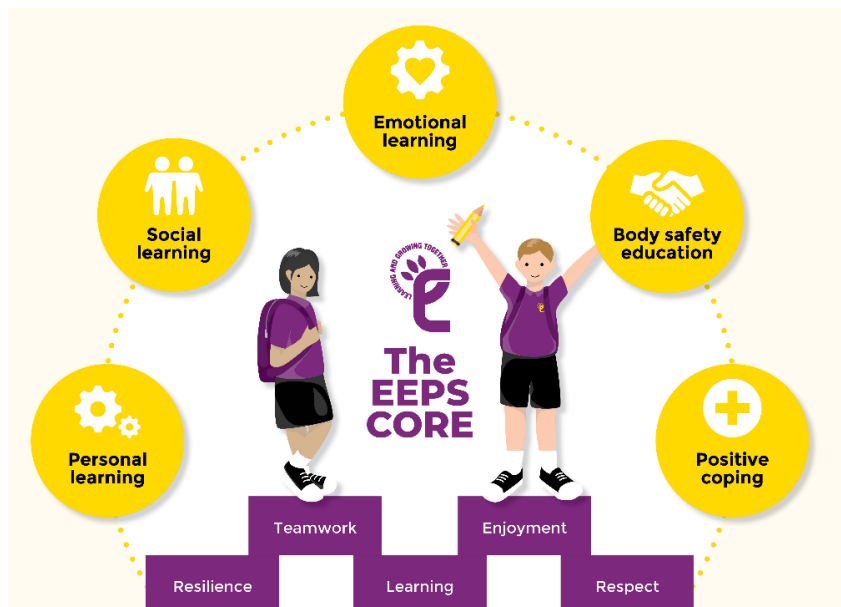
#### Emotional literacy – emotions and behaviours

#### Body Safety Education

- Body awareness
- Body autonomy
- Help-seeking

### Positive Coping

- Problems and our reactions
- Gratitude
- Mindfulness



Anna Baker  
Mental Health and Wellbeing Coordinator

## fcw EEPS WINTER TUNIC

SCHOOL WORK SPORTS CORPORATE WEAR

### PREORDER REMINDER

Winter Tunics are made to order, and need to be preordered and paid for by February 27th, 2022. These garments will be available for term 2. Please order and pay at

<https://fcw.com.au/shop-product/girls-winter-tunic-pinafore-grey-order-only/>

There are limited numbers at the EEPS uniform shop if you need to finalise sizing.

Kind regards,  
Melissa



## Admin News

### Compass Portal

#### EEPS Permission and Acknowledgments for 2022

At the start of each year we ask you to become familiar with, and acknowledge important school policies and programs. The relevant detailed documents for you to read are available on the school website: [www.elthameastps.vic.edu.au](http://www.elthameastps.vic.edu.au)  
Unfortunately the detailed content in these documents cannot be inserted here.

**You will be requested to give your consent in relation to the following items.**

1. ICT Acceptable use agreement for internet and digital technologies.
2. Photographing, Filming and Recording Students.

**Please ensure that this is acknowledged by Friday 26th February.**

**Department of Education provisioned Online Learning Services.**

***This is for new students commencing EEPS for 2022.***

At the start of each year we ask you to become familiar with, and acknowledge important school policies and programs, including **G Suite and Office365 online education services.**

The relevant detailed documents for you to read are available on the school website: [www.elthameastps.vic.edu.au](http://www.elthameastps.vic.edu.au)  
Unfortunately the detailed content in these documents cannot be inserted here.

**If you do not agree to the items below, please download the form from our website and refer to the opt out process.**

1. G Suite For Education Information Pack for Parents.
2. Office365 Information Pack for Parents.

### Local Excursions

**Events**— These excursions are conducted within the local area but outside the school grounds. They may include nature walks, picnics, visits to local historical buildings. You will be notified through a Compass Newsfeed when classes are participating in a local area excursion.

***Please ensure that consent for this event is completed on Compass by Friday 18th February.***

### Student Enrolment Information Form

Full Student Enrolment Information Forms have been emailed to all families. Please update enrolment information and return to the school office or via email to: [Anna.Strebinos@education.vic.gov.au](mailto:Anna.Strebinos@education.vic.gov.au) by

**Friday 26th February. *If you do not have any changes, you do not have to return the form.***

## 2022 EEPS SWIMMING TRIALS FOR YEAR 3 TO 6

Registration for our school swimming trials has now closed. If there are any parents who wish to help at this event, please email Derek Giles ([Derek.Giles@education.vic.gov.au](mailto:Derek.Giles@education.vic.gov.au)).

Students who are competing at the swimming trials this Friday will need to meet at the hall in full school uniform (bathers on underneath) with their school name lanyard, snack, drink bottle, towel and goggles at 8:50am.

Good luck to all our swimmers.

Thank you

Derek Giles



## 2022 Community Activities

### VOLUNTEERS WANTED FOR 2022

We are looking for more parent volunteers for the Special lunches (Bakers Delight and Sushi) sales on a Monday.

If you can help out, or need further information, please email [ana.strebinos@education.vic.gov.au](mailto:ana.strebinos@education.vic.gov.au) or telephone: 9439 9793.



### Bakers Delight Lunches & Sushi Lunches

Bakers Delight and Sushi lunches will begin again in 2022. Please look out for lunch order forms in the newsletter.

*Please write your child's name, class, room number and if it's a Bakers Delight or Sushi lunch on an envelope and place lunch order form and cash into envelope. Last day to place a lunch order is the Thursday before.*

#### Lunch Order dates for 2022

Bakers Delight Lunch	Monday 28th February	<i>Order form need to be at the school office by Thursday 24th February</i>
Sushi Lunch	Monday 28th March	<i>Order form need to be at the school office by Thursday 24th March</i>
Bakers Delight Lunch	Monday 16th May	<i>Order form need to be at the school office by Thursday 12th May</i>
Sushi Lunch	Monday 20th June	<i>Order form need to be at the school office by Thursday 16th June</i>
Bakers Delight Lunch	Monday 25th July	<i>Order form need to be at the school office by Thursday 22nd July</i>

#### Icypole sales

Icypoles will be sold out of the Discovery Kitchen every Monday. The cost of an icypole is \$1.00.

## Scholastic Book club

**Issue 1 orders are due back to the school office or via LOOP online BY THURSDAY 17th FEBRUARY.**

EEPS is continuing to participate in **Scholastic Bookclub** and we are thrilled to be able to return to offering deliveries direct to your child's classroom. Twice a term, your child will bring home a Club catalogue with a different selection of books offered for all ages.

You'll find award-winning books and bestsellers, as well as old and new favourites. The books span a wide range of children's reading levels and interests and are inexpensive (some books cost as little as \$2).

#### Ordering

The **Bookclub LOOP** platform for parents allows you to pay by credit card. Your child's order is submitted directly to school and the books will be delivered to class. You can place your child's order at [scholastic.com.au/LOOP](https://www.scholastic.com.au/LOOP) or using the **LOOP** app, which can be downloaded from the App Store or Google Play. **Existing LOOP Users** - When you log in, go to your Profile & update your child's 2022 class.

OR

The paper order form can be filled out at the back of the catalogue and handed in at the school office in a clearly named envelope along with the correct cash.

Each order helps earn free books and teaching materials for the classrooms & library, however there is never any obligation to order. Schools earn 20% from each order delivered to the school. In 2021, EEPS earned over \$2,500 in reward points which was used for new books for the library. Thank you!

Any queries can be directed to Bianca Hinkley through the school office.

Eltham East Primary School



Special Lunch Order Day

Monday 28<sup>th</sup> February, 2022

*(NB: payment required by Thursday 24<sup>th</sup> February, 2022(Cash Only)*

Child's Name..... Grade.....Room.....

Payment of **\$5.50** enclosed for lunch order of: an apple, fruit juice/water and savoury roll (please tick your selection below)

**Please send cash only in a labelled envelope with child's name, class and room number.**

**Savoury Roll Option - \$5.50**

- |                          |   |                          |                          |
|--------------------------|---|--------------------------|--------------------------|
| <input type="checkbox"/> | Cheese & Bacon  | <input type="checkbox"/> | Water                    |
| <input type="checkbox"/> | Cheese & Pineapple  | <input type="checkbox"/> | Apple Juice              |
| <input type="checkbox"/> | Cheesymite  | <input type="checkbox"/> | Apple/Blackcurrant Juice |
| <input type="checkbox"/> | Savoury Bite  | <input type="checkbox"/> | Orange Juice             |
|                          | (consists of a small roll, cocktail frankfurt, tomato sauce & cheese) | <input type="checkbox"/> | Tropical Juice           |

Eltham East Primary School



Special Lunch Order Day

Monday 28<sup>th</sup> February, 2022

*(NB: payment required by Thursday 24<sup>th</sup> February, 2022(Cash Only)*

Child's Name..... Grade.....Room.....

Payment of **\$6.50** enclosed for lunch order of: an apple, fruit juice/water and pizza slice (please tick your selection below)

**Please send cash only in a labelled envelope with child's name, class and room number.**

**Pizza Slice Option - \$6.50**

- |                          |   |                          |                          |
|--------------------------|---|--------------------------|--------------------------|
| <input type="checkbox"/> | Ham & Pineapple   | <input type="checkbox"/> | Water                    |
| <input type="checkbox"/> | Marguerita  | <input type="checkbox"/> | Apple Juice              |
| <input type="checkbox"/> | BBQ Bonanza   | <input type="checkbox"/> | Apple/Blackcurrant Juice |
|                          | (consists of BBQ sauce, ham, bacon, mild salami & cheese) | <input type="checkbox"/> | Orange Juice             |
|                          |   | <input type="checkbox"/> | Tropical Juice           |

## Newsletter Advertising—Community Notices

We accept advertisements to be included in our newsletter from most areas of private industry, however it should be noted that Eltham East's School Council does not endorse any product or service advertised.



**TENNIS LESSONS**  
LOCATION: RESEARCH TENNIS CLUB

WE SPECIALIZE IN LESSONS FOR BEGINNERS

**SPECIAL OFFER!!**

ENROL NOW & RECEIVE A  
**30% DISCOUNT**  
AND A NEW RACKET FOR  
**FREE!**



**FOR MORE INFORMATION**  
TEL: 9432-3706  
WEB: [WWW.TOPLINETENNIS.COM](http://WWW.TOPLINETENNIS.COM)  
EMAIL: [INFO@TOPLINETENNIS.COM](mailto:INFO@TOPLINETENNIS.COM)





## Newsletter Advertising—Community Notices

We accept advertisements to be included in our newsletter from most areas of private industry, however it should be noted that Eltham East’s School Council does not endorse any product or service advertised.

### Safety and School Crossings

Traffic safety around school zones is paramount to ensure the safety of our community. Nillumbik Shire Council are in the process of trialling new equipment to assist with patrolling of school zones areas. This trial is expected to run for a duration of approximately six months. This equipment trial will enable council to monitor school zones from vehicle with cameras affixed and on foot patrols to ensure a safe school zone for all vehicle and pedestrian users.

Please acknowledge this message as a friendly reminder to all parents/ carers to ensure they are parking safety, legally and abide by all road rules and ensure to be mindful of speed limits within the area,

Whilst there will be an increased presence in patrols in school zones across Nillumbik Shire Council, we ask that the school community respect officers that may be observed inspecting vehicles and if required issuing infringements.

In addition we would like to advise Council has completed an audit of all school crossings within Nillumbik, as a result of the audit you may notice some works being conducted to rectify issues identified., ie line marking, painting, replacing signage etc.

Keeping everyone safe around schools is a shared responsibility. Be sure to observe all school speed zones and parking restrictions. Patrols around school zones, which are done in conjunction with Victoria Police will also be resuming to help keep children safe.

Kind regards

Nillumbik Shire Councils Community Safety Team

## LIL' EAGLES DEVELOPMENT PROGRAM



REGISTER TODAY






Lil' Eagles is a program that has been specifically designed for children 5 – 10 years old (2017-2012 born). This program has been developed to provide an introductory experience to the game.

**Core focus:**

- fundamentals of basketball
- basic skills
- how to play within a team
- basic rules of the game

**With three locations and four times to choose from- you will be able to find one that suits!**

**Diamond Valley Sports and Fitness Centre**  
44 Civic Drive, Greensborough  
Wednesdays 4:00pm-4:45pm

**St Helena Secondary**  
50 Wallowa Rd, Eltham North VIC 3095  
Fridays 3:30pm-4:15pm

**Laurimar Primary School**  
1 Armidale Rd, Doreen VIC 3754  
Session 1 Fridays- 5:00pm-5:45pm  
Session 2 Fridays- 5:45pm-6:30pm  
Timeframe: 7 weeks  
Cost: \$70 Plus GST

For more information, contact:

**Raquel Connell- Community Development Manager**  
E- [raquel@dvbasketball.com.au](mailto:raquel@dvbasketball.com.au)  
OR register on our website  
[www.dvbasketball.com.au](http://www.dvbasketball.com.au)